

Aluminium Radiator

Installation Guide No. 1

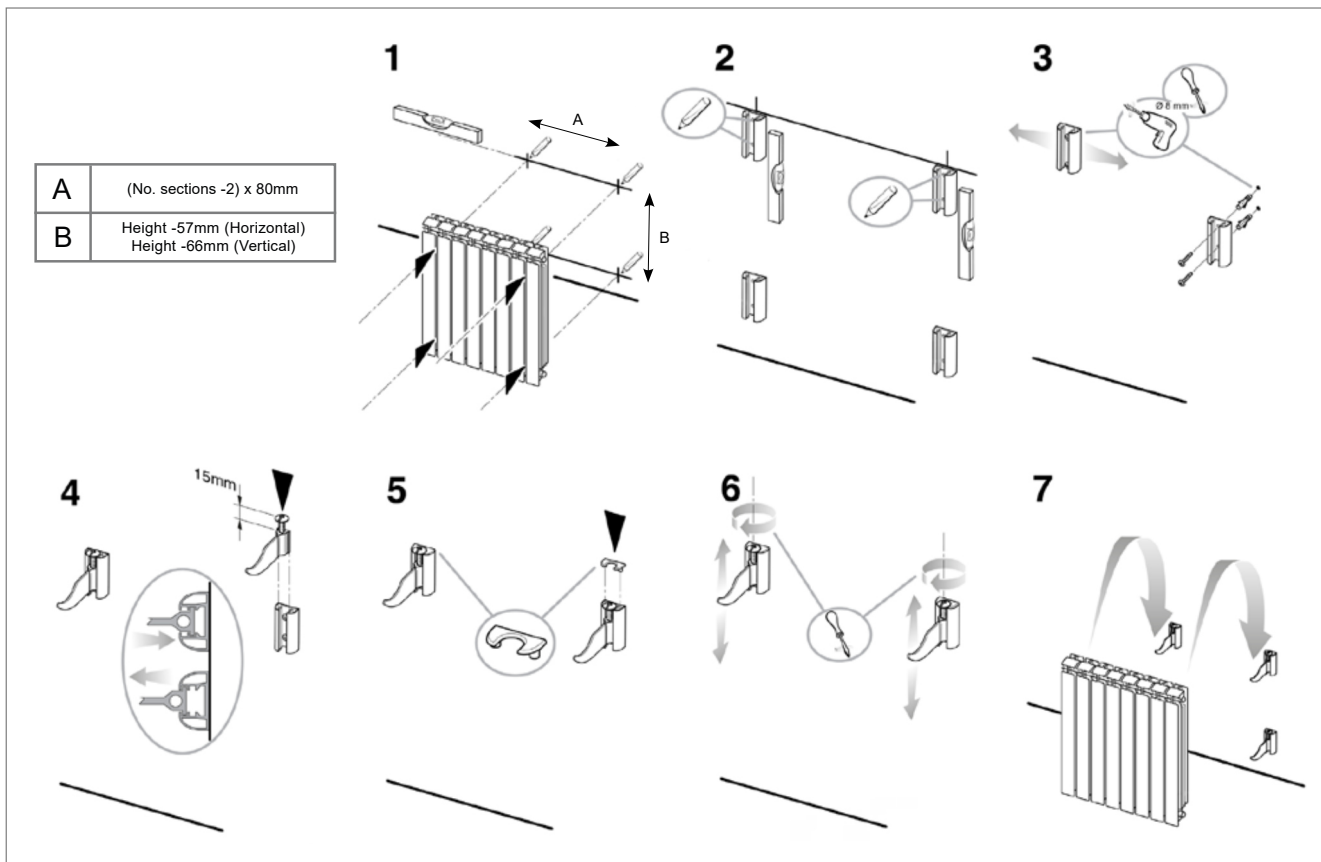


Infinity Aluminium Radiator

ATTENTION: The connection of this radiator to a central heating system should be carried out by a suitably competent person who is familiar with current regulations.

**READ THIS GUIDE BEFORE
STARTING INSTALLATION**

Hanging the radiator



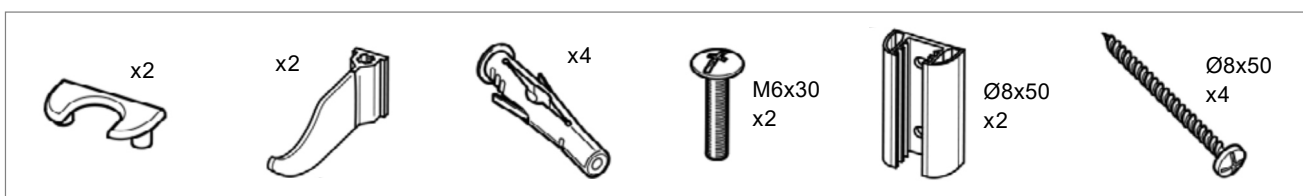
Bracket packs supplied:

3-16 sections	2
17+ sections	3

Notes:

- The bottom of the radiator must be at least 100mm from the floor.
- The top brackets are sufficient to support the weight of the radiator. If desired, the bottom brackets can be inverted to 'lock' the radiator into position, especially if the pipework is plastic or not securely fixed.
- Additional brackets are supplied for longer radiators, to be positioned in the middle if required.

Each bracket pack contains:



Continued on back page

Aluminium Radiator

Installation Guide No. 1

Installation of flow diverter for vertical

Vertical radiators can be connected to the heating system in the following ways:

- with water inlet at the top and outlet at the bottom
- with inlet and outlet at the bottom

When connecting radiators to a system with water inlet and outlet at the bottom, please note the following points:

- When the radiator has a bottom water inlet and outlet and up to 6 elements (Fig. 1), fit the rubber cap C (accessory30/1, supplied standard) on the first nipple N and after the adapter R. You can use the handle of a screwdriver to help you.
- When the radiator has a bottom water inlet and outlet and more than 6 elements (Fig. 2), fit the rubber cap C (accessory30/1, supplied standard) on the nipple N and after the second or third element. You can use the handle of a screwdriver to help you.

Figure 1

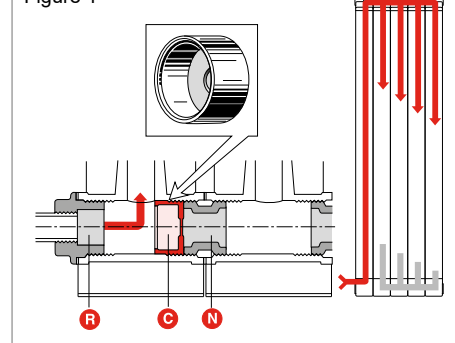
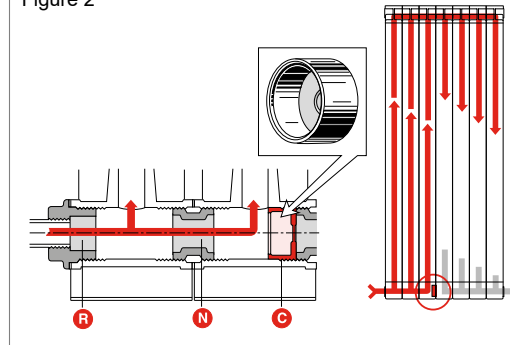


Figure 2

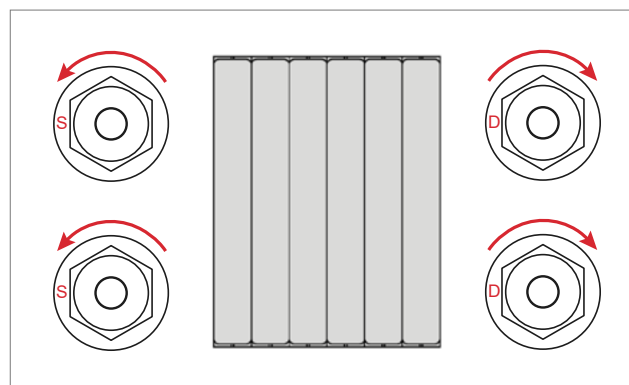


Installation of the reducing bushes

In some cases the reducing bushes need to be fitted by the installer. Facing the front of the radiator, the reducing bushes with an 'S' are to be fitted on the left by turning anti-clockwise. The reducing bushes with a 'D' are to be fitted on the right by turning clockwise.

The reducing bushes should be fitted using the gaskets provided. Do not use any joining compound or PTFE tape.

An air vent and blanking plug are supplied, to be fitted depending on the flow and return configuration.



Water treatment

These products are for use on closed heating systems only; they are NOT suitable for installation on secondary HWS circuits. On completion of the installation the entire system MUST be thoroughly cleaned and flushed to remove debris/flux residues etc. If a chemical cleanser is used, it must be thoroughly flushed from the system. Following this, the system MUST be dosed with a good quality water treatment to prevent corrosion. System design, flushing and dosing must be in accordance with BS 5449: 1990, BS EN 12828: 2003 and BS 7593: 1992.

IMPORTANT: Failure to observe these requirements will render the guarantee on the product void. Corrosion inhibitor must be used in accordance with the manufacturer's instructions and recommendations and should take into account the particular metals within the system.